

Note 2

Limit switches in the diagram show that the valve is in the intermediate position. Torque switches show that the output torque is less than the setting torque.

Note2: Two kinds of valve position feedback signals can be selected(Potentiometer is standard).
 Note3: A pair of passive contact thermal protection can be selected
 Note4: A pair of torque contacts can be selected.

Limite switch acting procedure

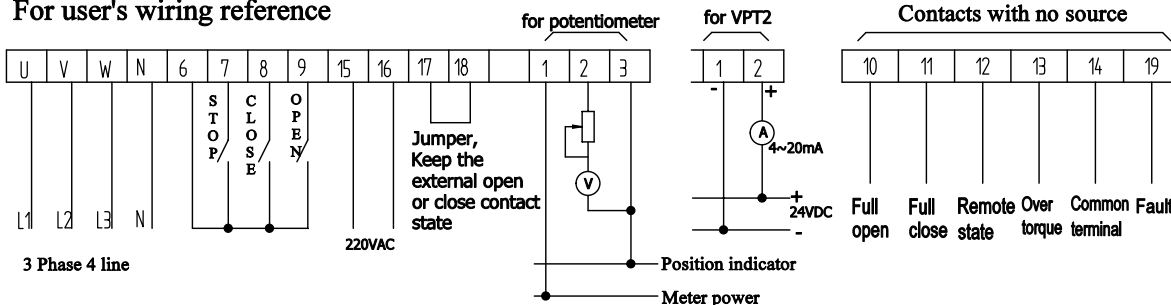
Valve direct	No.of switch	Contact	Valve position	
			Full close	Full open
OFF → ON	1KXK	(1A)-(1C)		
	2KXK	(3B)-(3C)		
ON → OFF	1GXK	(2A)-(2C)		
	2GXK	(4B)-(4C)		

Note: **ON** **OFF**

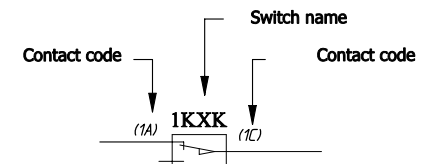
SYMBOL DESCRIPTION:

Symbol	Description
◎	Terminals for wiring
KXK , GXK	Open,close limit switch (250VAC/15A)
KZK , GZK	Open,close torque switch(250VAC/15A)
THR	Space heater(220VAC 6.8kΩ)
MTH	Temperature protection switch in motor winding
U	560Ω potentiometer (Resistance between P2 and P3 increase when the valve is moving towards opening)
VPT2	Transmitter
XKA , XGA	Open,close button
XK	Local/Remote selector
XK1	Operation state switch (250VAC/15A) connected at the state of "remote"
OC , CC	Open,close contact
OR CR SR	Intermediate relay
TH	Thermal overload relay
FUSE	Fuse for control circuit
TSF	Transformer (220VAC/ 24V208mA)

For user's wiring reference



Terminal number	Color
14	BK
Abbr	Color
WT	White
RD	Red
BU	Blue
BN	Brown
BK	Black
GY	Gray



Wiring diagram CE121-5E

For the series 802 with control package
 24VDC remote control loop