

Note

Limit switches in the diagram show that the valve is in the intermediate position. Torque switches show that the output torque is less than the setting torque.

Note: Two kinds of valve position feedback signals can be selected.

Limit Switch Contact Development

Rotor	Switch name	Contactor	Valve position	
			Fully close 0	Fully open 100
Close	Open	1KXX	(1A)-(1C)	
	→	2KXX	(3B)-(3C)	
Close	Open	1GXX	(2A)-(2C)	
	←	2GXX	(4B)-(4C)	

Note: — On — — Off

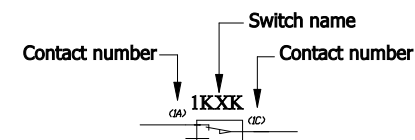
Description:

- ◎ Terminals for wiring
- KXX、GXX Open,Close limit switch (250VAC/15A)
- KZK、GZK Open,Close torque switch (250VAC/15A)
- THR Space heater
- MTH Temperature Protection Switch in Motor Winding
- U 1KΩ Potentionmeter
(Resistance between (2) and (3) increases when the valve is moving towards opening)
- VPT2 Transmitter
- XKA , XGA Open,close rotate button in site
- XK Local/remote selector
- XK1 Operating state switch (XK1 is close in remote state)
- OC、CC Open, close contact
- RT2 Resettable fuse
- KR,GR,JR Intermediate relay
- TSF Transformer

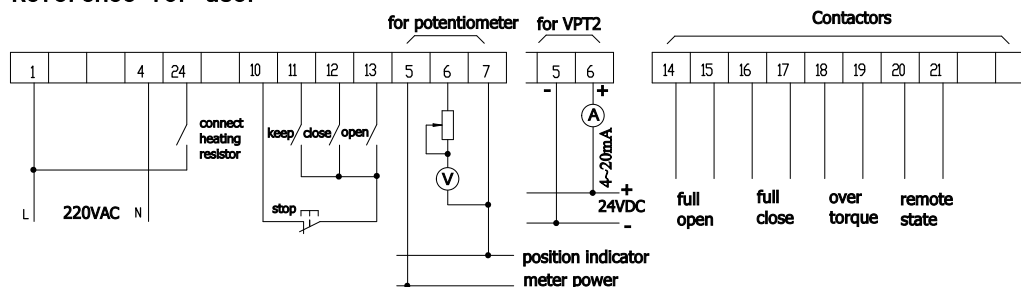
Terminal number

Color code

Code	Color
WT	White
RD	Red
BU	Blue
BN	Brown
BK	Black
GY	Gray



Reference for user



WIRING DIAGRAM CE423B

For integrated type of 8101~8103 (1 phase)