

Limit Switch Contact Development

Rotor	Switch name	Contactor	Valve position	
			Fully close 0	Fully open 100
Close	Open	1KXK	(1A)-(1C)	
→		2KXK	(3B)-(3C)	
Close	Open	1GXK	(2A)-(2C)	
←		2GXK	(4B)-(4C)	

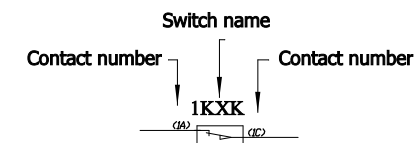
Note: — On    - - - Off

### Description:

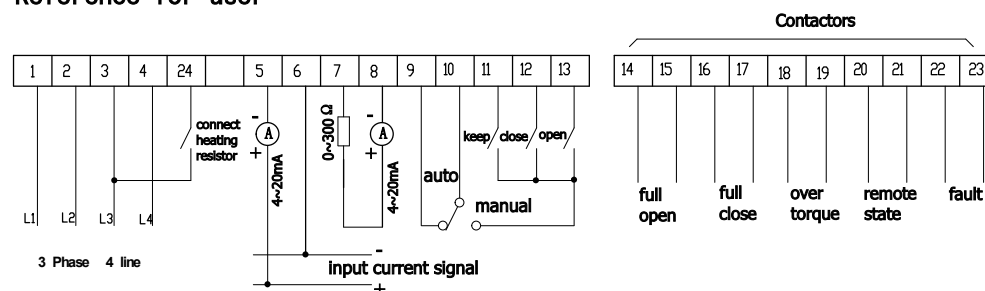
- ◎ Terminals for wiring
- KXK、GXK Open,Close limit switch (250VAC/15A)
- KZK、GZK Open,Close torque switch (250VAC/15A)
- THR Space heater
- MTH Temperature Protection Switch in Motor Winding
- U 1K $\Omega$  Potentiometer  
(Resistance between (2), (3) increases when the valve is moving towards opening)
- EPC Regulating module
- XKA , XGA Open,close rotate button in site
- XK Local/remote selector
- XK1 Operating state switch (XK1 is close in remote state )
- OC、CC Open, close contact
- GNB4 Phase and over-current protection board
- RT2 Resettable fuse
- KR,GR,JR Intermediate relay
- TSF Transformer

Terminal number    Color code

Code	Color
WT	White
RD	Red
BU	Blue
BN	Brown
BK	Black
GY	Gray



### Reference for user



## WIRING DIAGRAM CE431-1C

For regulating type of 8101~8103