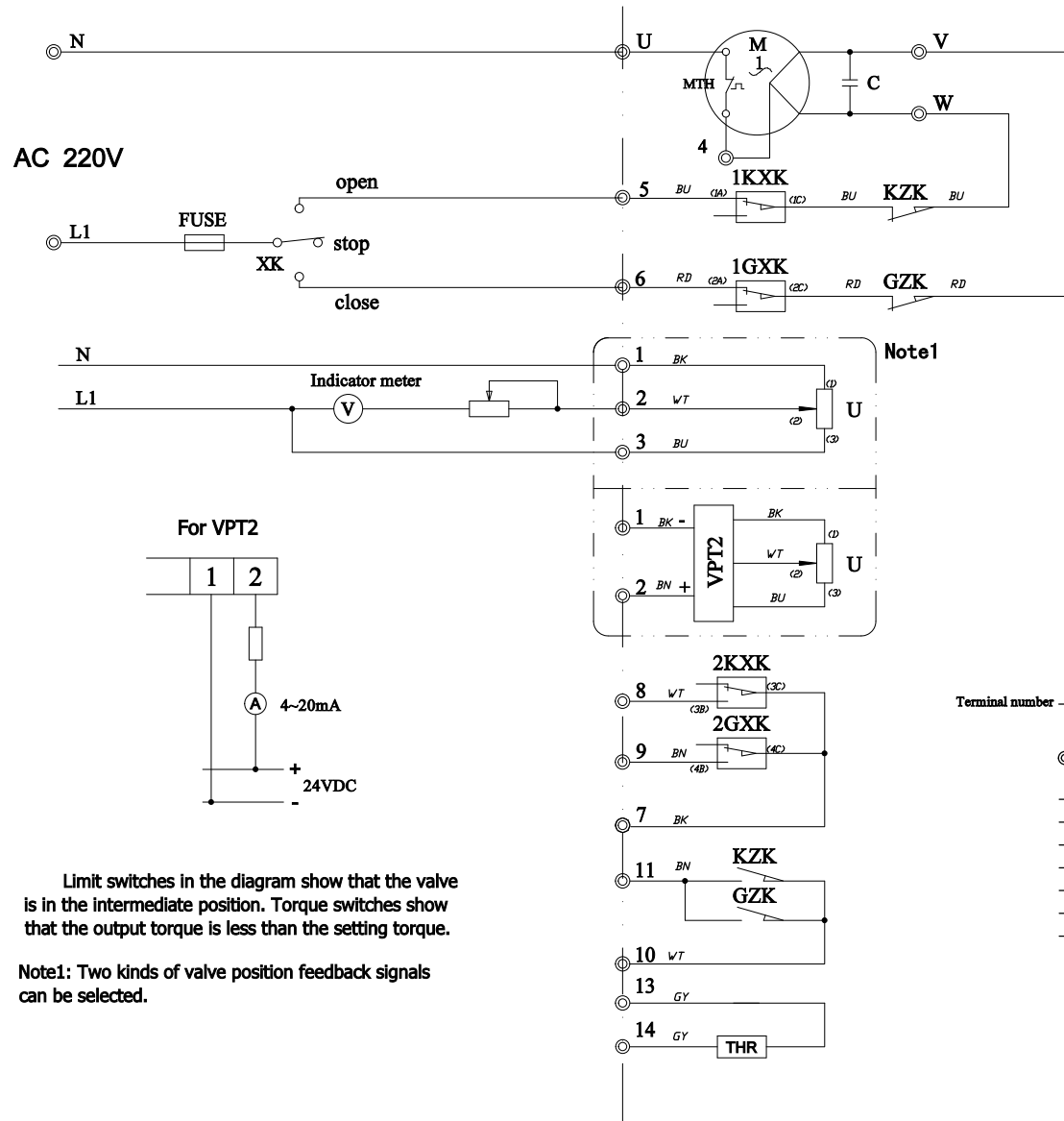


Reference for user ← Inner connecting →



Limit switches in the diagram show that the valve is in the intermediate position. Torque switches show that the output torque is less than the setting torque.

Note1: Two kinds of valve position feedback signals can be selected.

Limit Switch Contact Development

Rotor	Switch name	Contactor	Valve position	
			Fully close 0	Fully open 100
Close → Open	1KXX	(1A)-(1C)	—	—
	2KXX	(3B)-(3C)	—	—
Close ← Open	1GXK	(2A)-(2C)	—	—
	2GXK	(4B)-(4C)	—	—

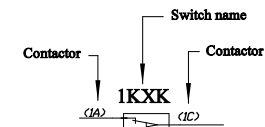
Note: — On - - - Off

Description:

- () Terminal jumper
- ⊙ Terminals for wiring
- KXX, GXK Open, Close limit switch (250VAC/15A)
- KZK, GZK Open, Close torque switch (250VAC/5A)
- THR Space heater (220VAC 6.8kΩ)
- MTH Protection switch in motor winding
- U 560Ω Potentiometer
(Resistance between (2) and (3) increases when the valve is towards opening)
- VPT2 Transmitter
- FUSE Fuse in control circuit
- XK Local/remote selector

Terminal number → Color code →

Code	Color
WT	White
RD	Red
BU	Blue
BN	Brown
BK	Black
GY	Gray



WIRING DIAGRAM CE313B

For 1ph actuator of 9030